



REGIONAL SPECIALISED METEOROLOGICAL CENTRE-TROPICAL CYCLONES, NEW DELHI
TROPICAL WEATHER OUTLOOK

DEMS-RSMC TROPICAL CYCLONES NEW DELHI DATED 25.12.2024

TROPICAL WEATHER OUTLOOK FOR THE NORTH INDIAN OCEAN (THE BAY OF BENGAL AND THE ARABIAN SEA) VALID FOR THE NEXT 168 HOURS ISSUED AT 0600 UTC OF 25.12.2024 BASED ON 0300 UTC OF 25.12.2024.

BAY OF BENGAL:

Yesterday's well marked low pressure area over Southwest & adjoining Westcentral Bay of Bengal off South Andhra Pradesh-North Tamil Nadu coasts moved northwestwards and persisted over the same region at 0300 UTC of today, the 25th December, 2024. It is likely to move further northwestwards and weaken gradually into a low pressure area over Westcentral & adjoining Southwest Bay of Bengal off South Andhra Pradesh-North Tamil Nadu coasts during next 24 hours.

The latest satellite imagery indicates low level cyclonic circulation centered near 12.0°N and 82.4°E. Intensity is T1.0. Associated Scattered low and medium clouds with embedded moderate to intense convection lay over westcentral & south Bay of Bengal between latitude 8.0°N to 19.0°N and longitude 85.0°E to 91.0°E (minimum cloud top temperature is -60°C to -69°C) and weak convection over Odisha. Scattered low and medium clouds over South Gangetic West Bengal, South Chhattisgarh, Jharkhand, North Coastal Andhra Pradesh, Tripura, Mizoram, Manipur and South Bangladesh.

Scattered low and medium clouds with embedded moderate to intense convection lay over central & adjoining northwest & southwest Bay of Bengal. Scattered low and medium clouds with embedded weak to moderate convection lay over north Bay of Bengal and Andaman Sea.

***PROBABILITY OF CYCLOGENESIS (FORMATION OF DEPRESSION) DURING NEXT 168 HRS:**

24 HOURS	24-48 HOURS	48-72 HOURS	72-96 HOURS	96-120 HOURS	120-144 HOURS	144-168 HOURS
NIL	NIL	NIL	NIL	NIL	NIL	NIL

***NOTE: EVERY 24HR FORECAST IS VALID UPTO 0300 UTC (0830 IST) OF NEXT DAY**

ARABIAN SEA:

Scattered low and medium clouds with embedded weak to moderate convection lay over Arabian Sea & Lakshadweep Islands area.

***PROBABILITY OF CYCLOGENESIS (FORMATION OF DEPRESSION) DURING NEXT 168 HRS:**

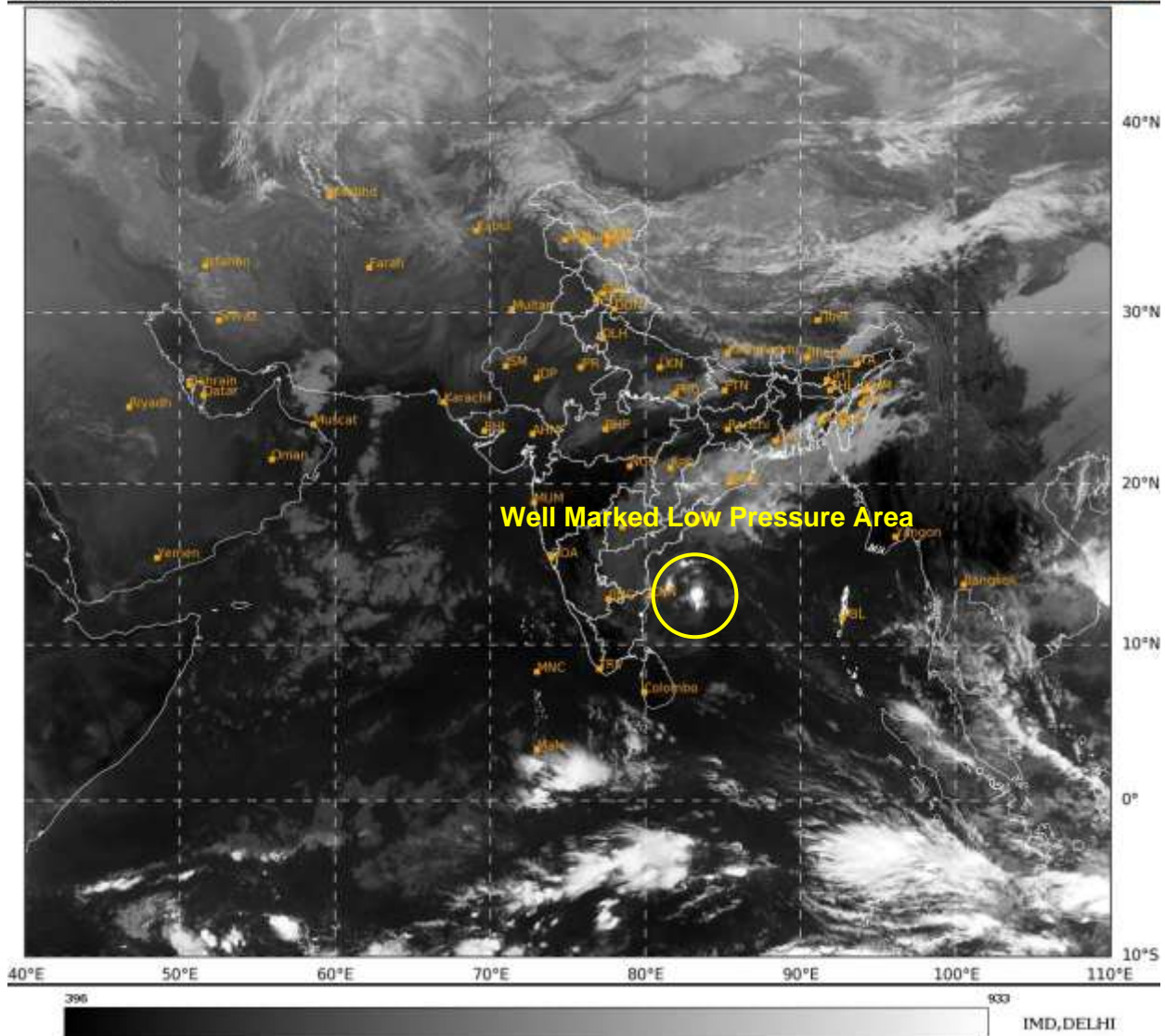
24 HOURS	24-48 HOURS	48-72 HOURS	72-96 HOURS	96-120 HOURS	120-144 HOURS	144-168 HOURS
NIL	NIL	NIL	NIL	NIL	NIL	NIL

***NOTE: EVERY 24HR FORECAST IS VALID UPTO 0300 UTC (0830 IST) OF NEXT DAY**

REMARKS: NIL

SAT : INSAT-3DR IMG
IMG_TIR1 10.8 um
LIC Mercator

25-12-2024/(0515 to 0542) GMT
25-12-2024/(1045 to 1112) IST



Cloud distribution: (a) Isolated: <25%, Scattered:25-50%, Broken: 51-75%, Solid:>75%, Convection Intensity: (a) Weak: Cloud Top Temperature (CTT) >-25°C, (b) Moderate: CTT: - 25°C to -40°C, (c) Intense: CTT: - 41°C to -70°C and (d) Very Intense: : Less than -70°C
PROBABILITY OF CYCLOGENESIS (FORMATION OF DEPRESSION):NIL: 0%, LOW: 1-33%, , MODERATE: 34-66% AND HIGH: 67-100%
This is a guidance Bulletin for WMO/ESCAP Panel Member countries. Visit respective National websites for Country specific Bulletins